



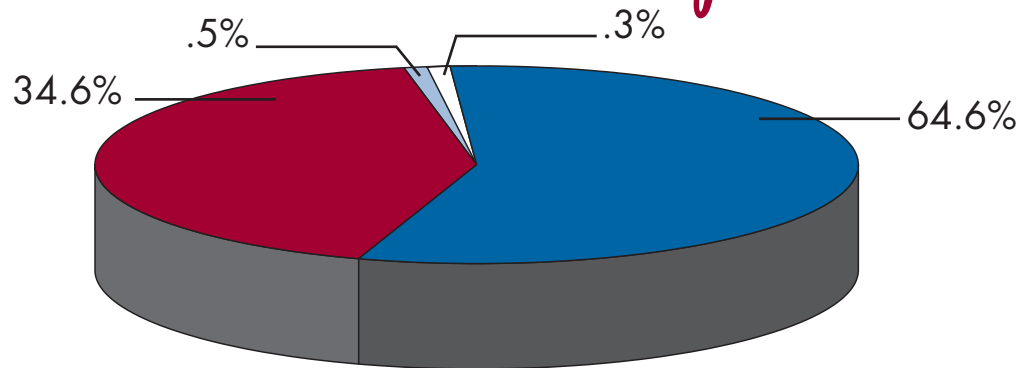
2014 annual report

By the Numbers...

The Homeless Families Foundation **served 254 families**, including **495 children** (65% under the age of 7) **in 2014** with a **success rate of 89%** of our families moved to permanent housing.

The **2013/2014 school year** and **summer programs** were the HFF Dowd Education Center's first year as a licensed **21st Century Community Learning Center**. A total of **104 students** were served. Quantitative data shows that students are making gains in reading and math during the school year and summer; Youth Development, including behavior and homework, shows significant improvement; and, **daily attendance is nearly 80%**.

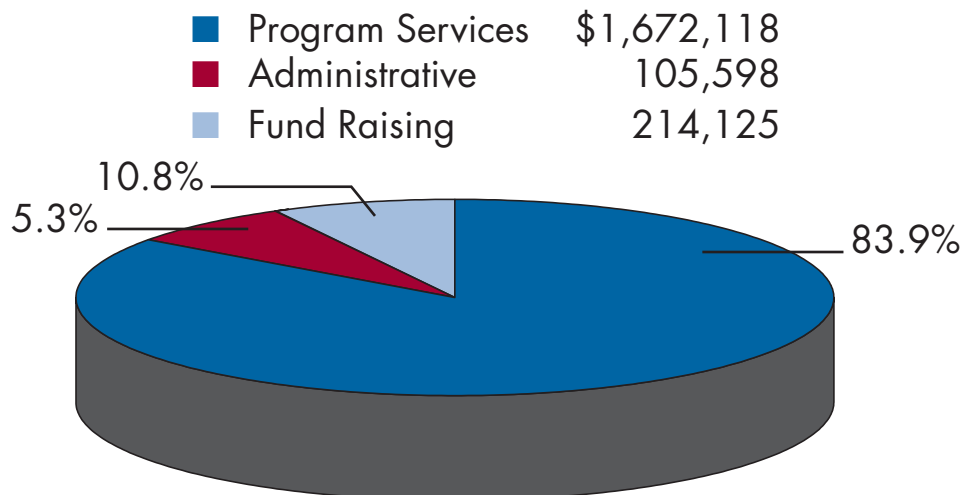
Income & Expenses



REVENUE:

Restricted Operating Grants	\$1,272,440
Contributions	681,159
Donated Services	10,378
Other	5,182

EXPENSE:



Program Services	\$1,672,118
Administrative	105,598
Fund Raising	214,125

Statement of Activities

For the years ended December 31, 2014 and 2013

	Unrestricted	Temporarily Restricted	2014	2013
Public Support and Revenue:				
Contributions	\$681,159	\$ 0	\$681,159	\$762,721
Donated Services	10,378	0	10,378	130,982
Interest Income	1,871	0	1,871	2,093
Miscellaneous	536	0	536	1,214
Change in Pledge Value	0	2,775	2,775	(6,258)
Restricted Operating Grants	0	1,272,440	1,272,440	1,266,554
	<u>693,944</u>	<u>1,275,215</u>	<u>1,969,159</u>	<u>2,157,306</u>
Net Assets Released from Restrictions	<u>1,278,007</u>	<u>(1,278,007)</u>	<u>0</u>	<u>0</u>
Total Public Support and Revenue	1,971,951	-2,792	1,969,159	2,157,306
Expenses:				
Program Services	1,672,118	0	1,672,118	1,403,360
Administrative and General	105,598	0	105,598	103,100
Fund Raising	214,125	0	214,125	148,503
Total Expenses	<u>1,991,841</u>	<u>0</u>	<u>1,991,841</u>	<u>1,654,963</u>
Increase (Decrease) in Net Assets before				
Increase (Decrease) in Net Assets	-19,890	-2,792	-22,682	502,343
Net Assets, Beginning of Year	<u>1,907,537</u>	<u>344,926</u>	<u>2,252,463</u>	<u>1,750,120</u>
Net Assets, End of Year	\$1,887,647	\$342,134	\$2,229,781	\$2,252,463

Statement of Financial Position

For the years ended December 31, 2014 and 2013

Assets	2014	2013	Liabilities	2014	2013
Cash	\$896,738	\$863,943	Accounts Payable	\$20,328	\$19,723
Gift Cards	21,241	46,535	Accrued Payroll	27,914	19,139
Accounts Receivable	188,320	154,940	Other Accrued Expenses	23,031	26,193
Pledges Receivable	176,517	193,742	Capital Leases	2,204	5,510
(future payments of grants have been discounted at 2%)			Line of Credit	60,980	129,516
			Mortgage Payable	<u>45,295</u>	<u>59,046</u>
Prepaid Expenses	2,403	29,926	Total Liabilities	179,752	259,127
Deposits	3,700	0			
Fixed Assets			Net Assets		
Land	91,378	91,378	Unrestricted	1,887,647	1,907,537
Building	1,882,721	1,873,221	Temporarily Restricted	<u>342,134</u>	<u>344,926</u>
Equipment	305,245	309,931	Total Net Assets	<u>2,229,781</u>	<u>2,252,463</u>
Less: Accumulated Depreciation	<u>-1,158,730</u>	<u>-1,052,026</u>			
Net Fixed Assets	1,120,614	1,222,504			
Total Assets	\$2,409,533	\$2,511,590	Total Liabilities and Net Assets	\$2,409,533	\$2,511,590

Additional information about the financial position of The Homeless Families Foundation can be found in the 2014 Audited Financial Report and 2014 IRS 990. These will be posted on our website at www.homelessfamiliesfoundation.org under "Who We Are" and "Financial Reports."

The Homeless Families Foundation, 33 North Grubb Street, Columbus, OH 43215-2478 Phone: 614-461-9247, info@homelessfamiliesfoundation.org